



PREMIER
LEASE CARE

YOUR TRUSTED CO



VERAGE SOURCE

- Providing protection for consumers and vehicles since 1981
- Administrating over one million service contracts
- A+ rating from the Better Business Bureau

*"I wish every extended warranty company was like you guys...
Thanks for being awesome!"*

—Monica in Springfield, MO

A man with a beard and glasses, wearing a grey hoodie, is driving a car. He is looking out the window towards the right. The scene is illuminated by warm, golden light from the setting or rising sun, creating a soft glow. The text "OPTIMAL COVERA" is overlaid in white, uppercase letters across the top of the image.

OPTIMAL COVERA

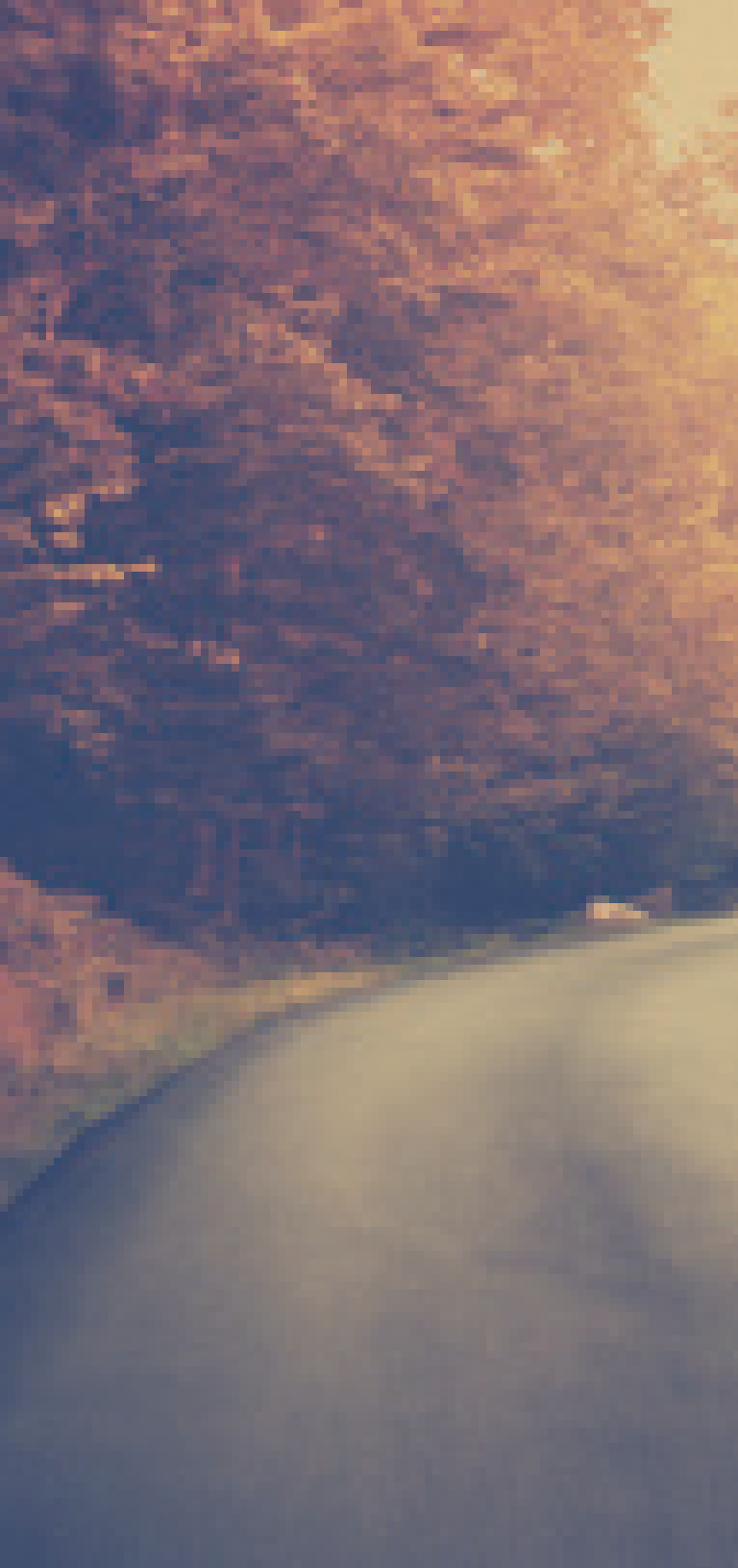
GE FOR YOUR LEASED VEHICLE

You just leased a new vehicle, and with that, you gained many benefits over buying, such as:

- Being able to drive a nicer vehicle for less
- Just returning the vehicle at lease-end, paying any end-of-lease costs, and walking away
- The fact that the vehicle's future value doesn't affect you financially

However, as great as those benefits are, leasing is not risk-free. As you turn in your automobile at the end of your lease, there are some key items to be aware of:

- At lease end, your vehicle will go through a thorough "turn in" inspection by an independent third party.
- All of the interior and the entire exterior, including the tires and wheels, will be inspected for excess wear and use.
- You'll be responsible for any costs to repair or replace the items that do not pass inspection.





A photograph of a road at sunset or sunrise. The sky is a mix of deep blue and orange, with long, soft shadows cast across the road. A large, dark tree stands in the background on the left. In the distance, a car is visible on the road. The overall mood is serene and contemplative.

JUST

IN CASE

No matter the cause—like that mystery dent, ding, or scratch; chipped or cracked glass; damage to the wheel or wheel cover; tires worn unevenly, bulging, sidewall damage, or a tire below the minimum tread depth, are all often considered excessive wear and use.

Other excess wear and use items on the interior can include: stains, scratches, tears, missing parts, or any feature that's not functioning as intended—like a blown speaker or malfunctioning switch.

A Premier Lease Care plan takes most of the risk away of leasing a vehicle by providing coverage for up to \$1000 of excess wear and use protection for each element or continuous damage across multiple elements, with a \$5000 plan aggregate limit.

Protect your new vehicle, and your budget, with a Premier Lease Care plan from MBPI.

For more information about MBPI's Premier Lease Care, speak with your dealer representative today.

A COMPA



NY YOU CAN TRUST

MBPI has been around since 1981 and, with so many satisfied customers, we've earned ourselves an A+ rating with the Better Business Bureau.

Because we're employee-owned, we strive to maintain a positive and progressive company culture. We want you to have a positive experience with us—no matter what—so we start by making sure all calls are answered by a real live person.

Thank you for choosing us; we're here for you when you need us. MBPI is your trusted coverage source.

This brochure provides a general overview of the product. Please refer to the actual contract provisions for additional information including details of benefits, eligibility, specific exclusions, terms, conditions, and limitations. Coverages may differ in certain states and coverage may not be available in all states.

BBB rating is at time of print.



Mechanical Breakdown Protection, Inc.

250 NE Mulberry St., Lee's Summit, MO 64086

800-325-7484

www.mbpnetwork.com



Check out our free MBPI mobile app!

